

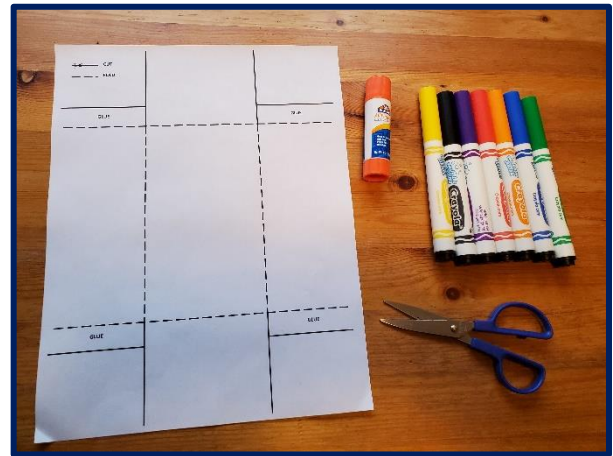
Make your own fire engine

The Seattle Fire Department uses fire engine to carry fire fighters to emergencies. They also carry equipment like ladders and hoses.

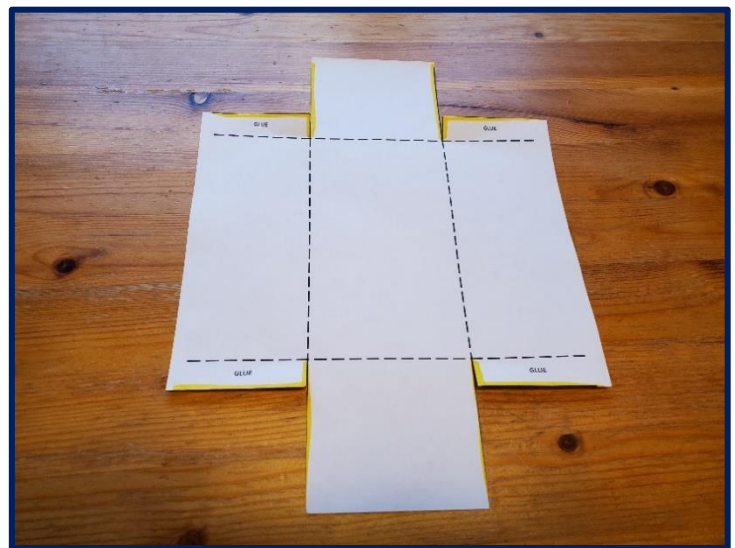
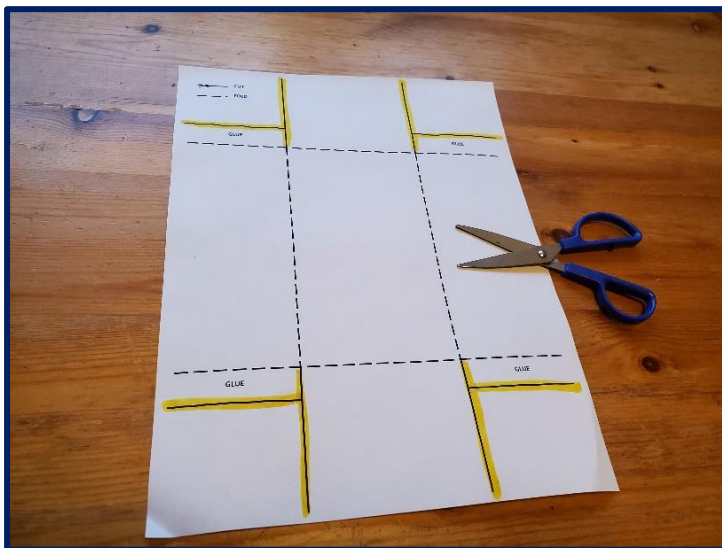
Build and decorate your very own fire engine!

You will need:

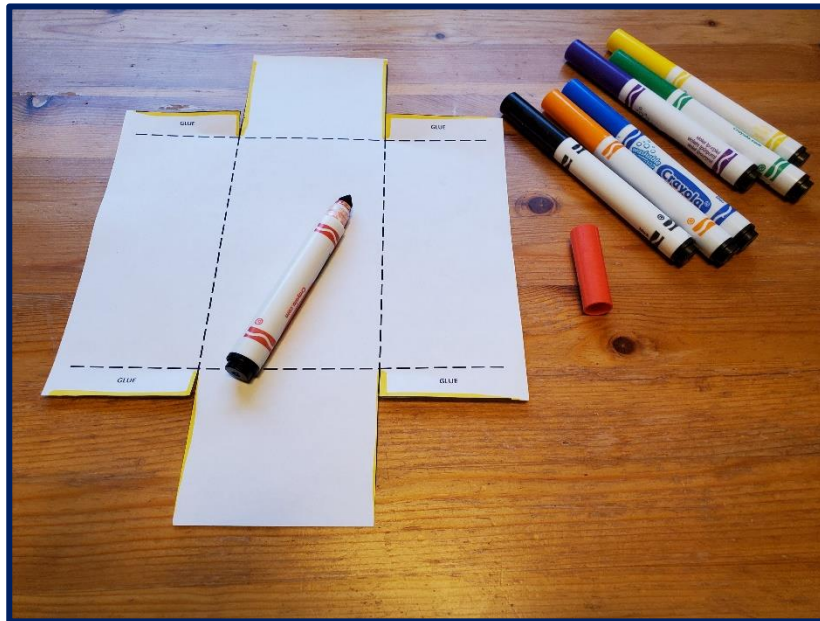
- Markers, crayons, or colored pencils
- A glue stick
- Scissors
- The fire engine template printed out



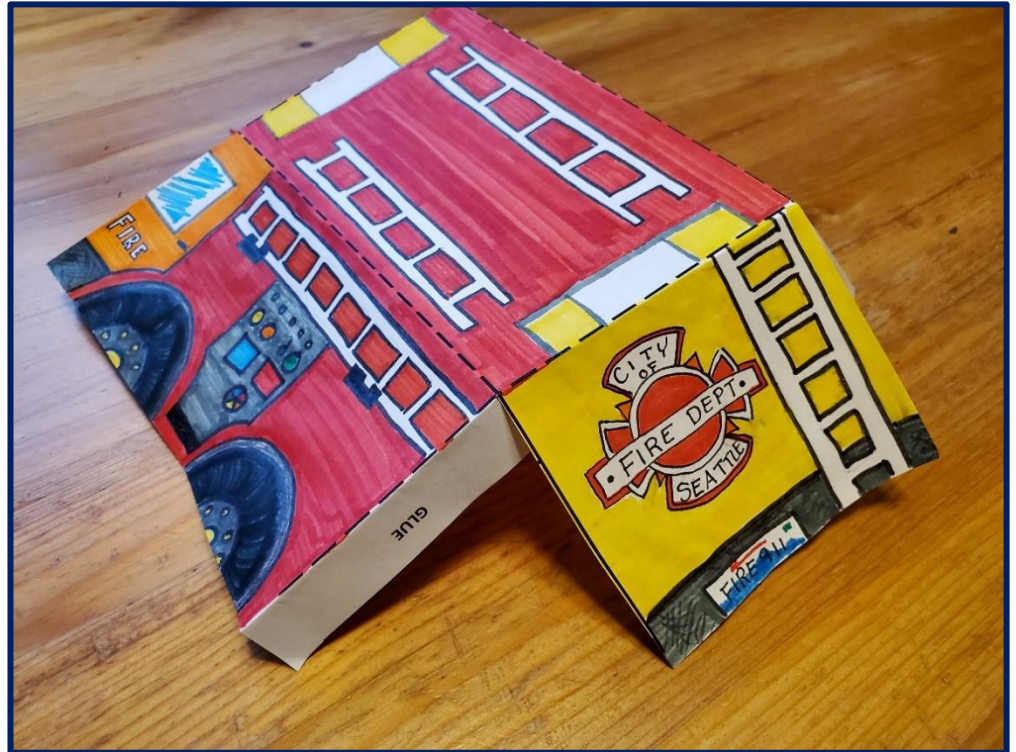
**1) Cut along the solid lines (shown here in yellow) on your template.
You can ask your grown up for help if you need.**



2) Design and decorate your fire engine – you can make it look like the engines that the Seattle Fire Department uses, or you can design your own.



- 3) Fold along the dotted lines on the truck.



- 4) Put some glue on tab that says “glue” and fold the 4 white tabs inside the fire engine.



5) **Let the glue dry.**



6) **Enjoy your fire engine!**



Make a fire dog puppet

Did you know that the Seattle Fire Department has fire rescue dogs to help fire fighters?

Create your very own fire rescue dog!

You will need:

- Markers, crayons, or colored pencils
- A glue stick
- Scissors
- A paper bag- lunch bag size
- The decorations template printed out



1) Color and cut out any decorations you want- fire fighter helmet, paws, ears.



- 2) Glue the ears, paws, and hat to the bag.



- 3) Decorate your fire dog- give it eyes, a nose, and a mouth. Does your fire dog have spots? Is it wearing any special gear?

- 4) You are all done!

